



Black Oaks Ranch

Tehachapi California

Black Oaks Ranch

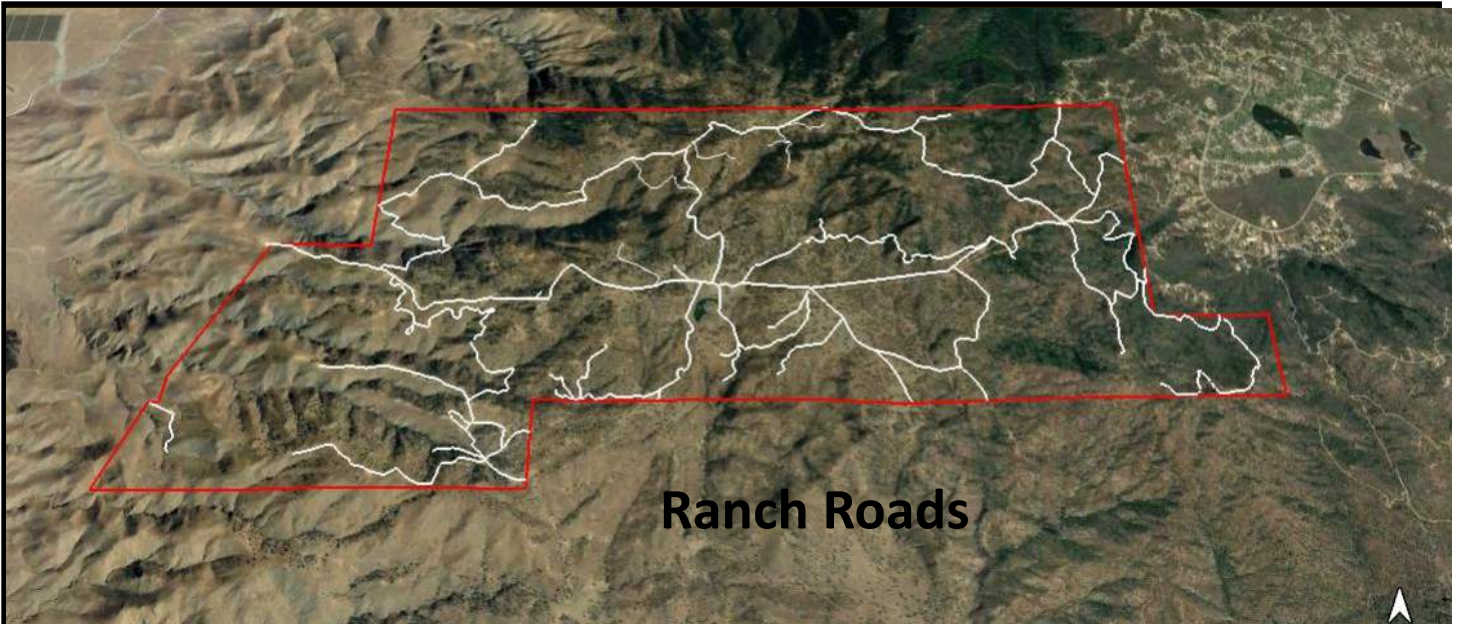


This private ranch represents a truly unique opportunity to own a spectacular 7,000-acre property in Southern California. This property is located in the Tehachapi mountains, elevated above the south eastern portion of the San Joaquin valley. There are spectacular views in all directions, from the snow covered Mt Whitney, 100 miles NNE, to the Costal Range Mountains, just across the narrow San Joaquin Valley . Black Oaks butts up to Bear Valley Springs, one of southern California's most successful mountain communities. Bear Valley offers Four Island Lake and Cub lake for water recreation, tennis courts, golf course, RC airport, community swimming pool, recreation center with training equipment and basket ball court and much more.

Black Oaks Ranch currently supports a profitable cattle operation and hunt club. Abundance of wildlife, deer, bobcat, elk, wild pig, mountain lion, quail, rabbit and much more, abound this spectacular land.

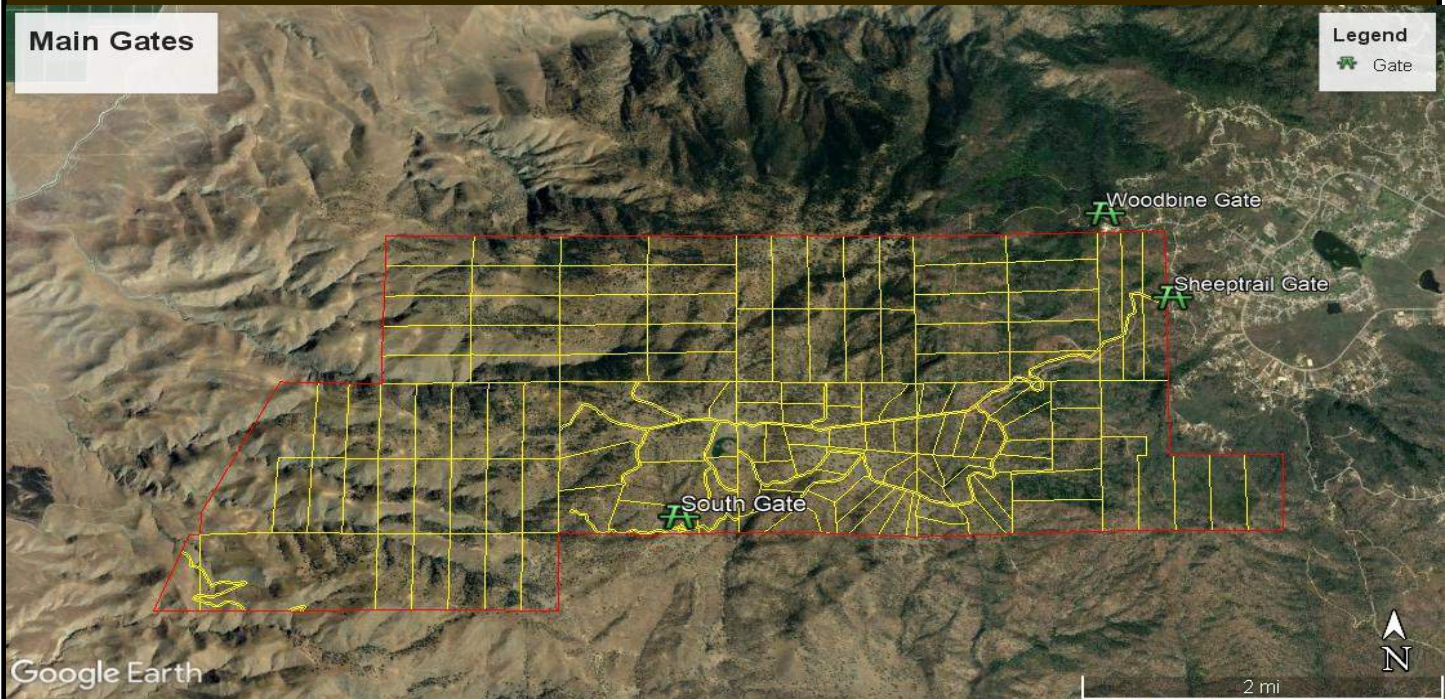
The abundance water makes this premier property a strong candidate for future development.





Ranch Roads

The remote areas of the ranch are accessible through a network of seasonally maintained roads. The more remote areas are worth the exploring, as they reveal the beauty of this magnificent mountain property. Many of these roads parallel ancient native American Indian trails. The many grindstones throughout the ranch is evidence of the Indigenous tribes that lived here. Research reveals the tribes were mainly hunter gatherers that thrived in the Tehachapi mountains for hundreds of years.



Main Gates

Legend
X Gate

Woodbine Gate

Sheeptrail Gate

South Gate

Google Earth

2 mi



The main gates to this enormous property are accessible through Bear Valley Springs and Stallion Springs. The proximity to these resort like residential developments offer a variety of advantages that makes Black Oaks Ranch unlike any other ranch available in California.

As you explore the ranch, you will appreciate these maps as they will aid you in orientation of where you are and where you may want to go.

The terrain varies from a beautiful valley floor to the magnificent steep mountain sides that slope into the western valley. Many areas have their own unique micro climates as you can ascend or descend a couple of thousand feet from the valley in several directions.

